



NASADAD

Dose of Reality - It's Not Just the "O" Word!

Trends, Realities and Opportunities
BY THE NUMBERS
2015-2017

NEBRASKA

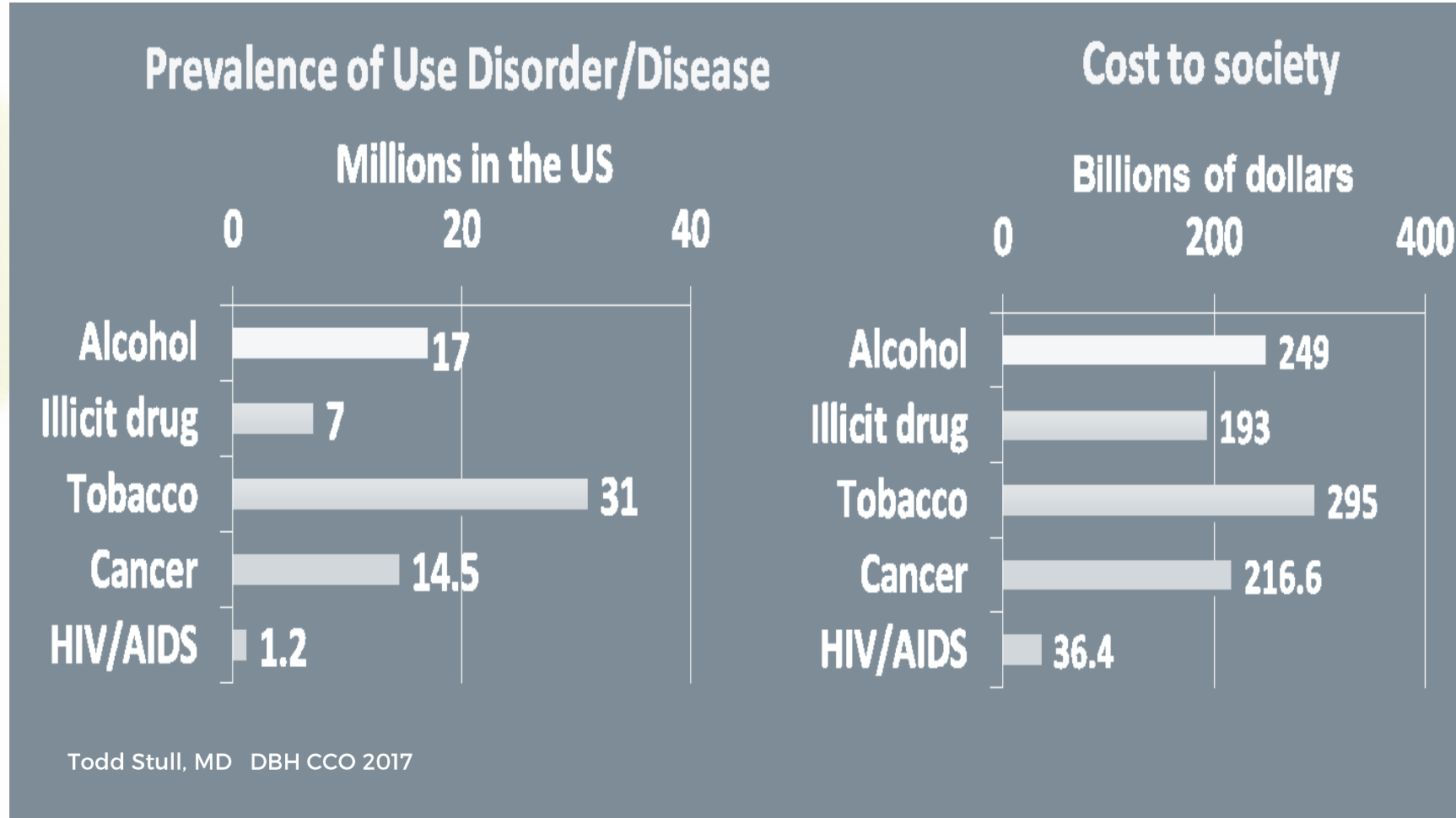
Good Life. Great Mission.

DEPT. OF HEALTH AND HUMAN SERVICES

Helping People Live Better Lives.

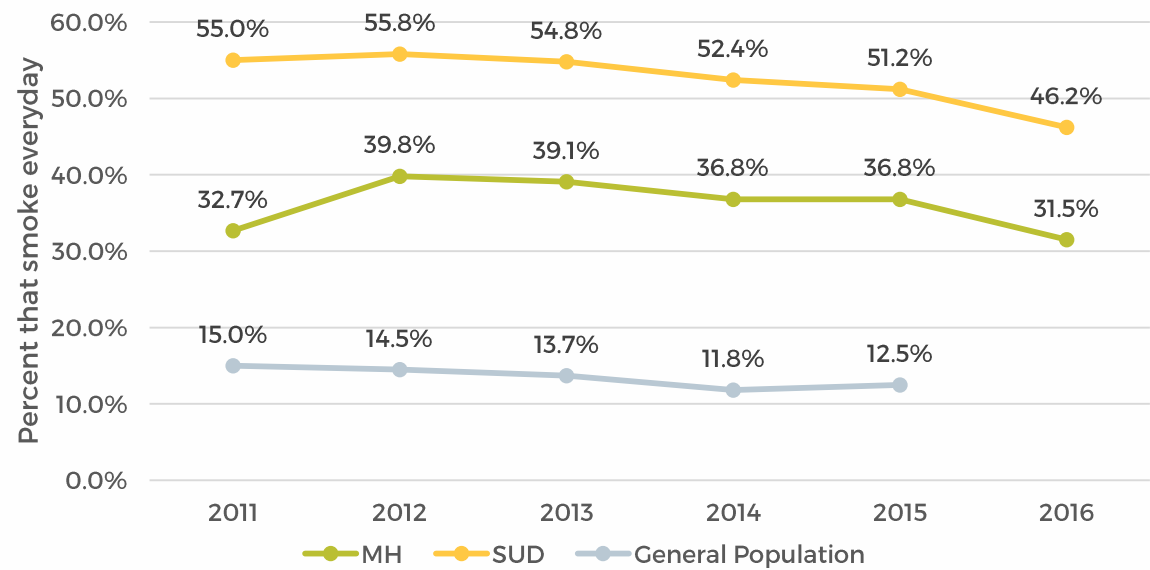


Snapshot: Substance Use Nationally



Nicotine Use Among Nebraska MH/SUD Populations

Percent of Mental Health, Substance Use Disorders and Nebraska General Population that smoke cigarettes every day 2011-2016



Source: BRFSS/DBH Consumer Survey 2011-2016

Approximately 25% of adults in the U.S. have some form of mental illness or substance use disorder, and these adults consume almost 40% of all cigarettes smoked by adults.¹



1. Substance Abuse and Mental Health Services Administration, Center for Behavioral Health Statistics and Quality. 2013

Alcohol is involved in half of all liver disease deaths in the U.S. each year.

SBIRT anyone?

Integration anyone?

MAT anyone?

NEBRASKA

Good Life. Great Mission.

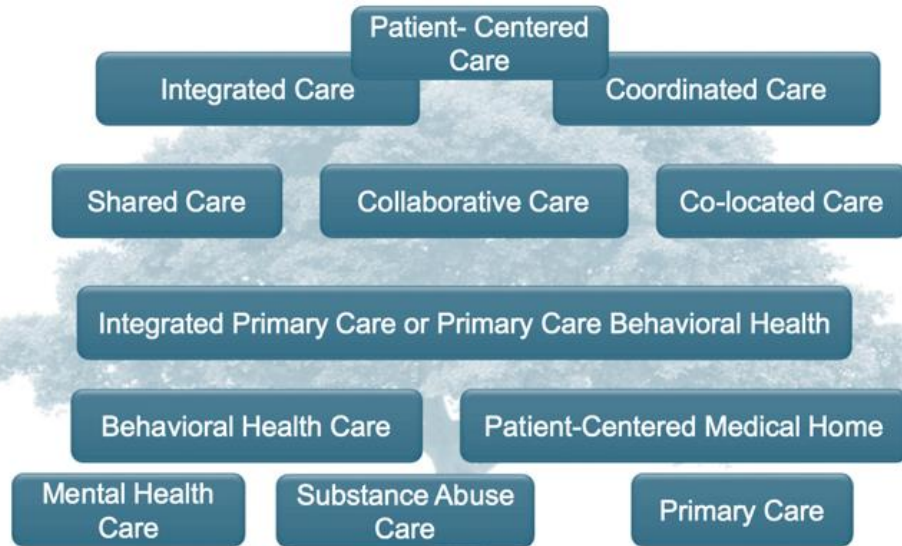
DEPT. OF HEALTH AND HUMAN SERVICES

Helping People Live Better Lives.

It's Healthcare

Nebraska's Integration Lexicon

'Lexicon of Integrated Care Terms



Adapted from: Peek, CJ – A family tree of related terms based on behavioral health and primary care integration.
<http://integrationacademy.ahrg.gov/lexicon>

Nebraska's Current Framework



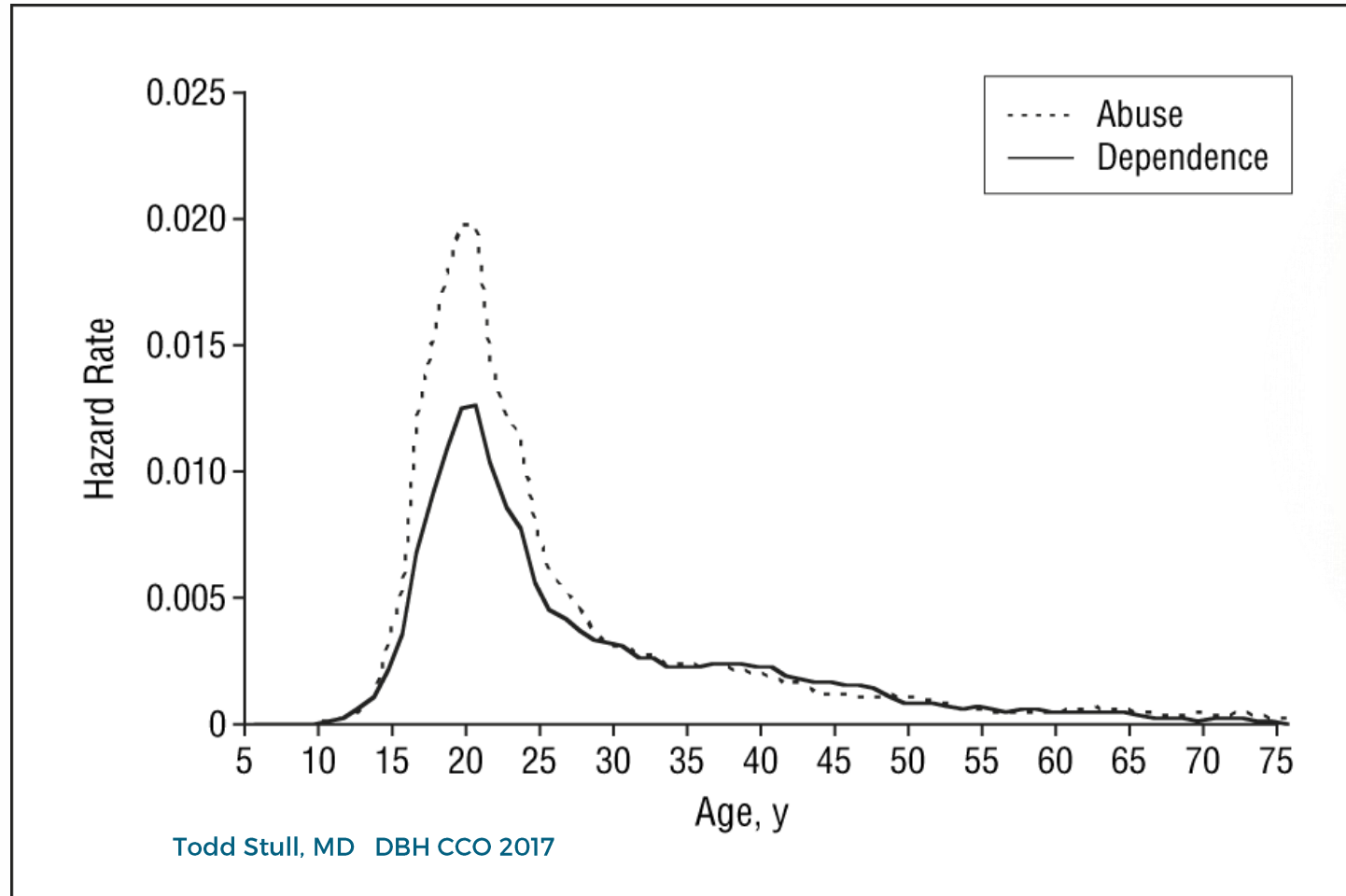
NEBRASKA

Good Life. Great Mission.

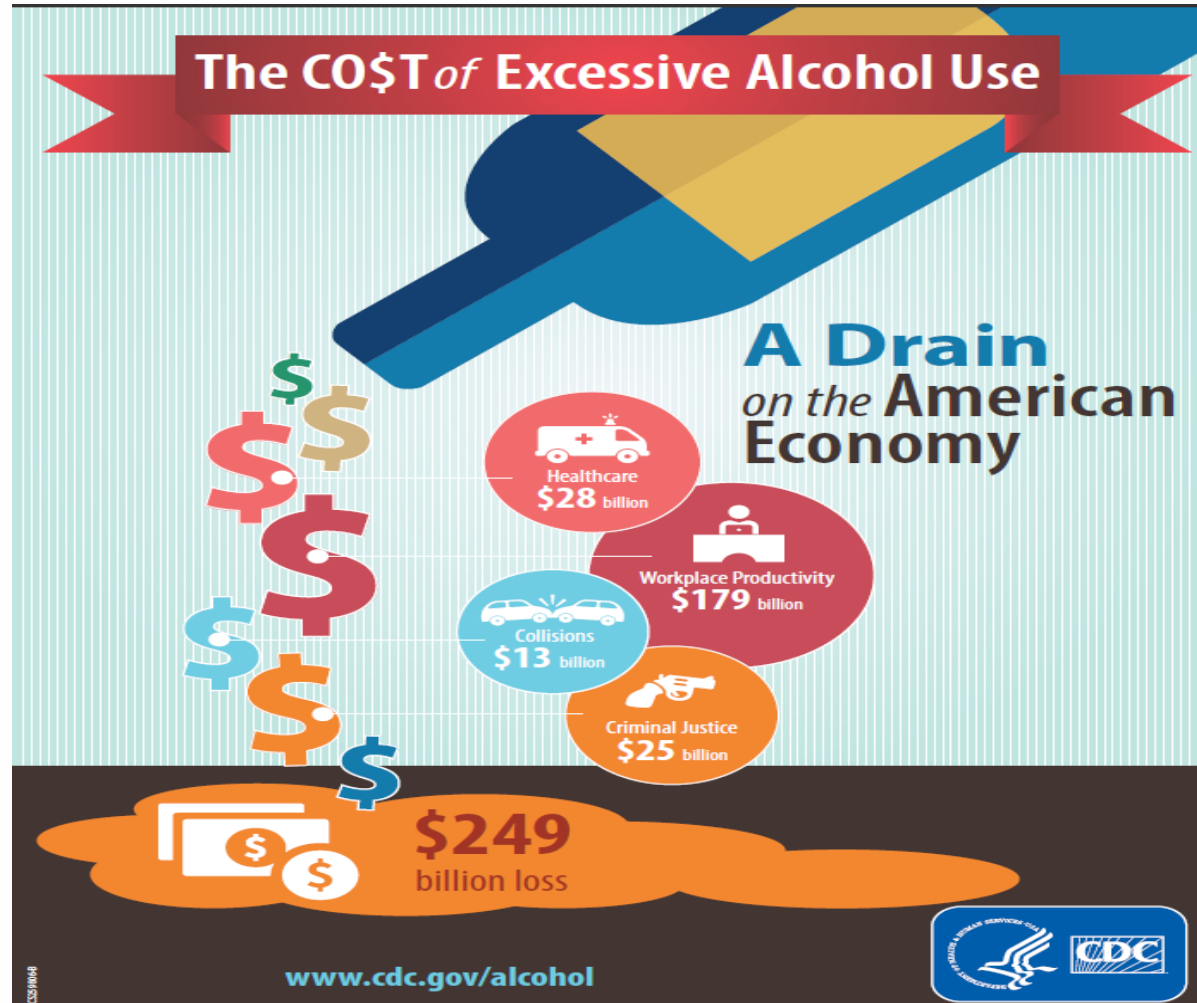
DEPT. OF HEALTH AND HUMAN SERVICES

Helping People Live Better Lives.

Across the Lifespan: A Period of Risk for Substance Use and Addiction



Alcohol Use: Costs



- Binge drinking was responsible for 77% of the costs.
- \$2 of every \$5 (over \$100 billion) was borne by governments.

CDC, 2015

NEBRASKA
Good Life. Great Mission.
DEPT. OF HEALTH AND HUMAN SERVICES

Helping People Live Better Lives.

Substance Use: Cost to Nebraska Employers

Estimated Employer costs of Substance Abuse (including Alcohol) in Nebraska, 2015

Industry	Prevalence of Substance Use Disorder	Cost of Lost Time	Cost of Job Turnover & Re-training	Cost of Health-care	Total Cost
Agricultural, Forestry and Fishing	Moderate	\$1,082,385	\$2,757,120	\$5,637,276	\$9,482,166
Construction	Highest	\$9,167,488	\$7,389,602	\$6,423,634	\$22,980,724
Manufacturing	Average or Below	\$13,968,245	\$15,301,995	\$9,734,168	\$39,020,538
Retail	Moderate	\$15,852,603	\$16,895,697	\$11,706,720	\$44,467,149
Information & Communications	Moderate	\$7,382,382	\$7,804,342	\$1,863,056	\$17,049,780
Finance, Insurance & Real Estate	Moderate	\$8,778,510	\$9,941,475	\$7,579,518	\$26,299,503
Professional, Technical & Management	Moderate	\$20,325,996	\$9,727,496	\$7,220,936	\$37,274,428

<https://www.nsc.org/forms/substance-use-employer-calculator/index.aspx>

Estimated Employer costs of Substance Abuse (including Alcohol) in Nebraska, 2015

Industry	Prevalence of Substance Use Disorder	Cost of Lost Time	Cost of Job Turnover & Re-training	Cost of Health-care	Total Cost
Administration, Support & Waste Management	Moderate	\$6,377,796	\$20,498,824	\$8,98,882	\$35,866,144
Education, Health & Social Services	Average or Below	\$14,714,550	\$28,482,550	\$21,961,102	\$65,158,202
Entertainment, Recreation & Food	Highest	\$12,100,998	\$17,193,696	\$11,755,934	\$41,050,628
Government & Public Service	Average or Below	\$6,497,085	\$4,302,795	\$6,258,582	\$17,058,462

Source: Substance Abuse Disorder Costs for Employers Calculator
<https://www.nsc.org/forms/substance-use-employer-calculator/index.aspx>

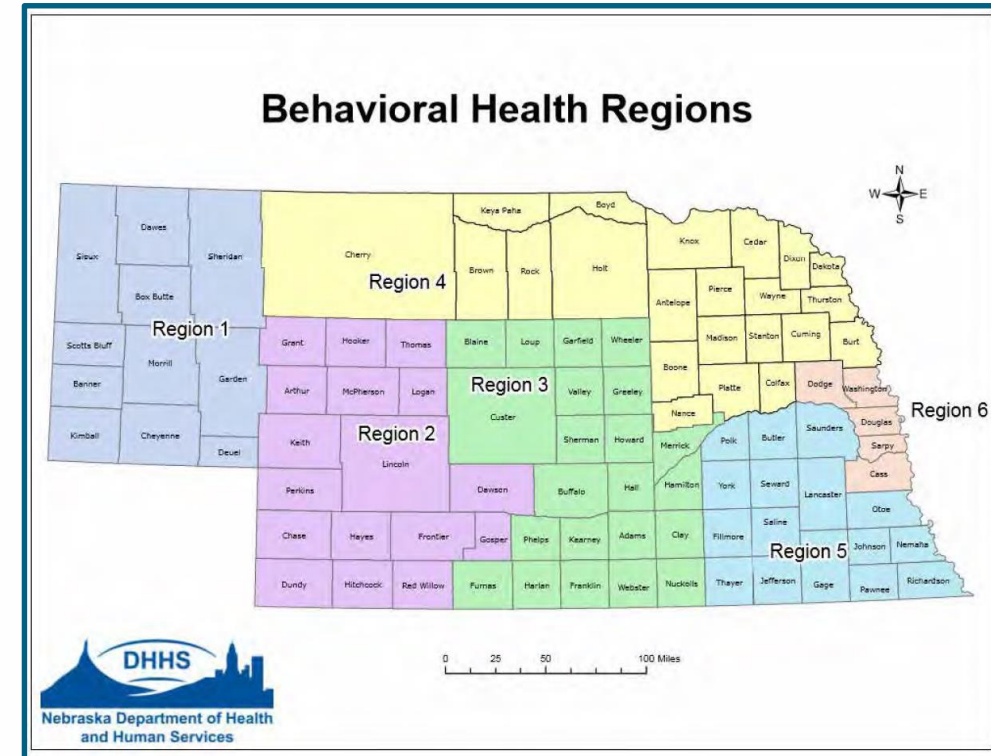
NEBRASKA
 Good Life. Great Mission.
 DEPT. OF HEALTH AND HUMAN SERVICES

Helping People Live Better Lives.

About Nebraska

By The Numbers:

- In 2015, an estimated 1.9 million people were living in Nebraska.
- Nationally and in Nebraska, ¼ of deaths are related to alcohol, nicotine, opioids and other drugs.
- In 2015, Nebraska ranked 47th in the nation, with a 20.3% adult binge drinking prevalence, a striking difference compared to West Virginia (ranked 1st) with a prevalence less than 10%. (Nebraska Behavioral Health Needs Assessment 2016)



- The Division of Behavioral Health provides services across six behavioral health regions. All but one (Omaha-Region 6) are comprised of rural counties.

NEBRASKA
Good Life. Great Mission.
DEPT. OF HEALTH AND HUMAN SERVICES

Helping People Live Better Lives.

Substance Use: Nebraska Realities

- Among young adults (18 – 25 years) in Nebraska, about 1 in 5 reported using an illicit drug in the past month. (SAMHSA 2010-2012 National Survey on Drug Use)
- During the 8-year period (2007-2014), there were a total of 9,672 hospitalizations due to substance use disorders in Nebraska. (Nebraska Behavioral Health Needs Assessment 2016)
- Of those aged 12 or older with illicit drug dependence or abuse in Nebraska, 88.8% did not receive treatment in the past year compared to 85.9% nationally (Nebraska Behavioral Health Needs Assessment 2016)
- When comparing the earlier period (2007-2010) and the recent period (2011-2014), it was found that the rate of hospitalization due to substance use disorder in Nebraska increased among adults aged 20-64 by 45%. (Nebraska Behavioral Health Needs Assessment 2016)

NEBRASKA

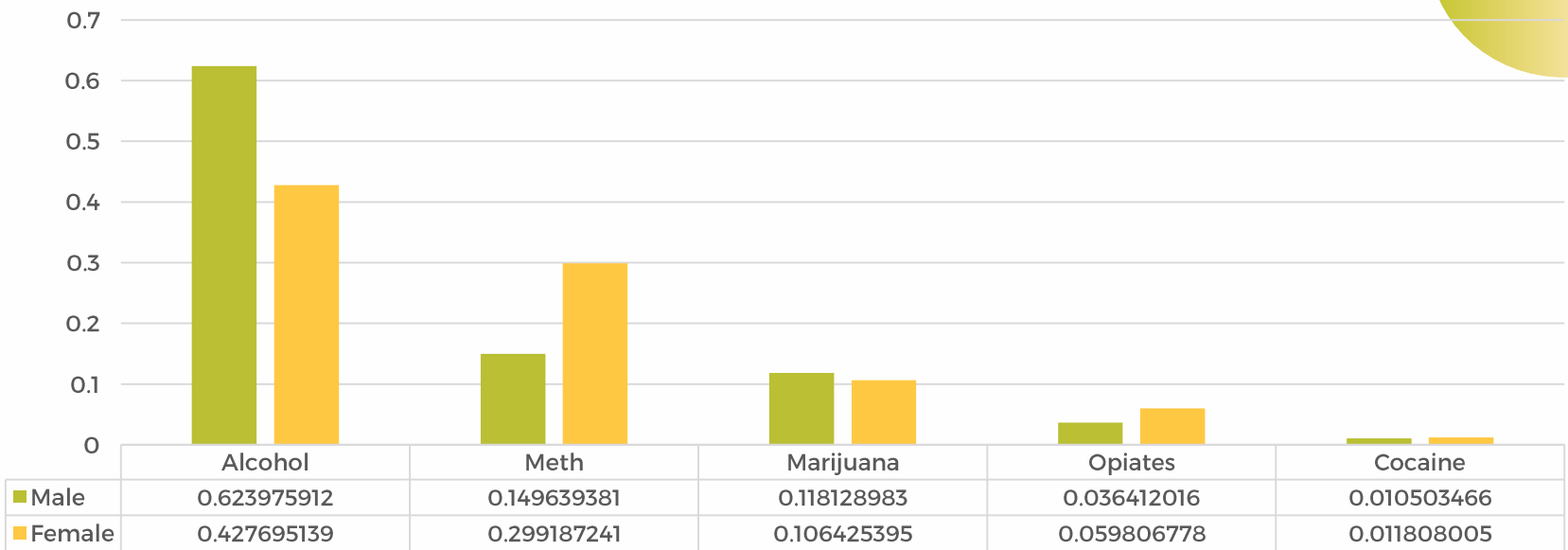
Good Life. Great Mission.

DEPT. OF HEALTH AND HUMAN SERVICES

Helping People Live Better Lives.

Snapshot: Substance Use In Nebraska

Primary Drug of Choice among Nebraska Substance Abuse Treatment Center Admissions, by Gender 2016

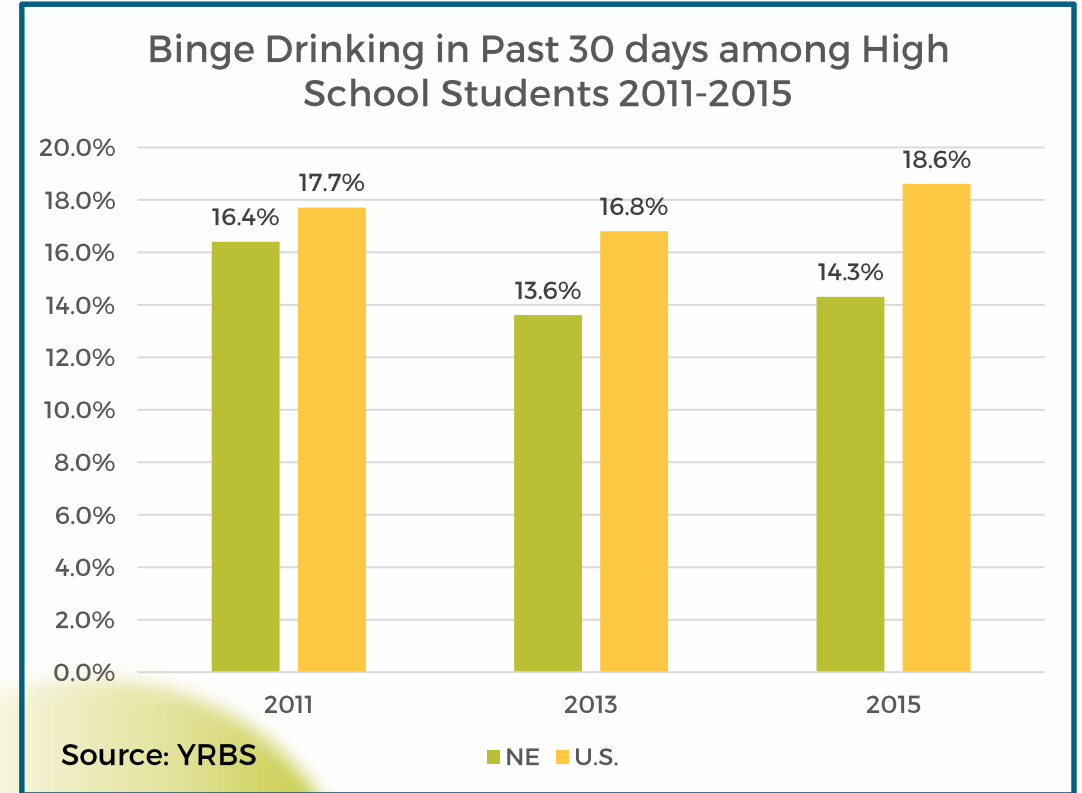
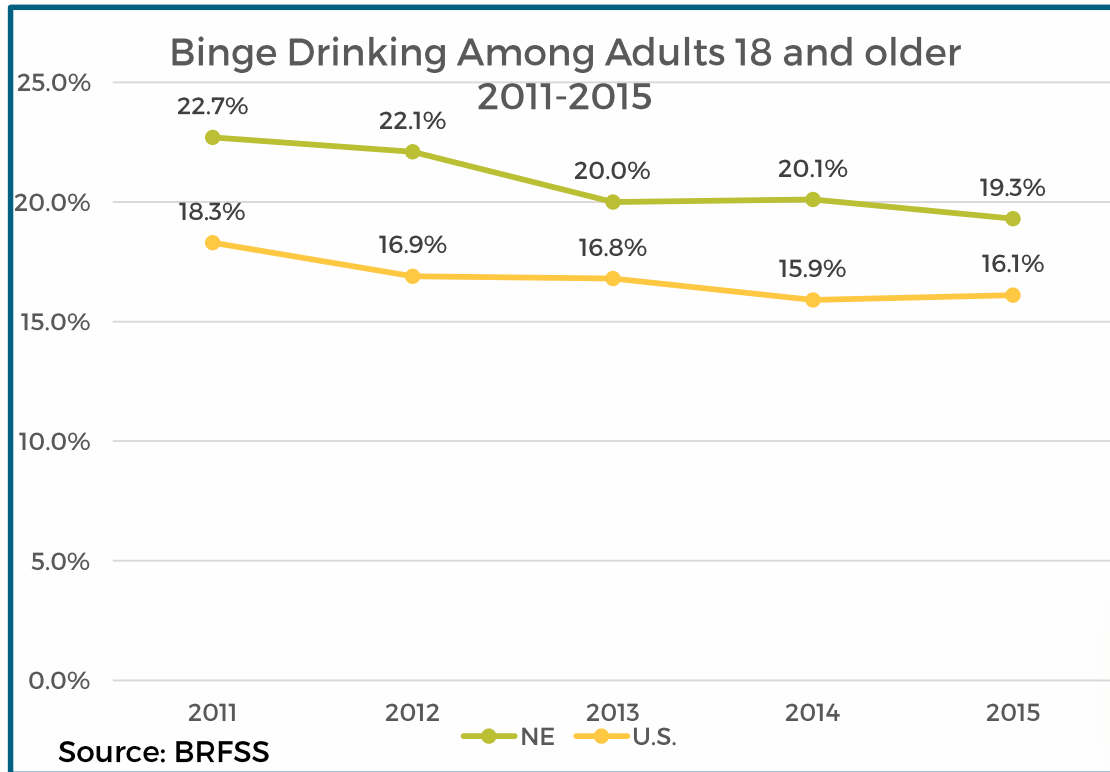


Compared to the U.S., alcohol use in Nebraska is higher than average while smoking and most drug use shows a similar rate.

Note: Excludes admissions in which the drug of choice information was not reported
Source: Centralized Data System, Nebraska Division of Behavioral Health

Alcohol: Binge Drinking in Nebraska

The prevalence of Nebraska adults engaging in binge drinking is higher than the national average.



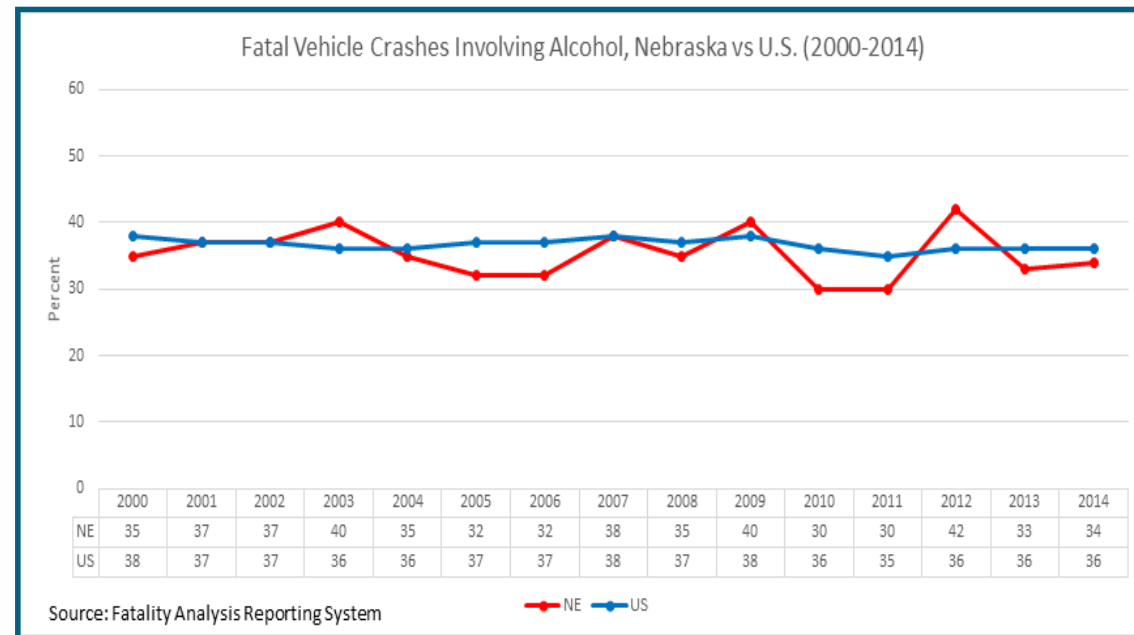
Alcohol Use - Trends

Age-adjusted alcohol-related death rates (excluding auto accidents) per 100,000 in Nebraska and U.S.: 2004-2013 Vital Statistics Data

Indicator	NE Rate (2013)	US Rate (2013)	NE Trend (2004-2013)
Chronic Liver Disease	8.9	10.2	Increasing
Death due to Homicide	4.2	5.2	Increasing
Death due to Suicide	11.6	12.6	Increasing

Nebraska Behavioral Health Needs Assessment 2016

Percentage of Nebraska vehicle fatalities attributed to alcohol all ages, 2000-2014.



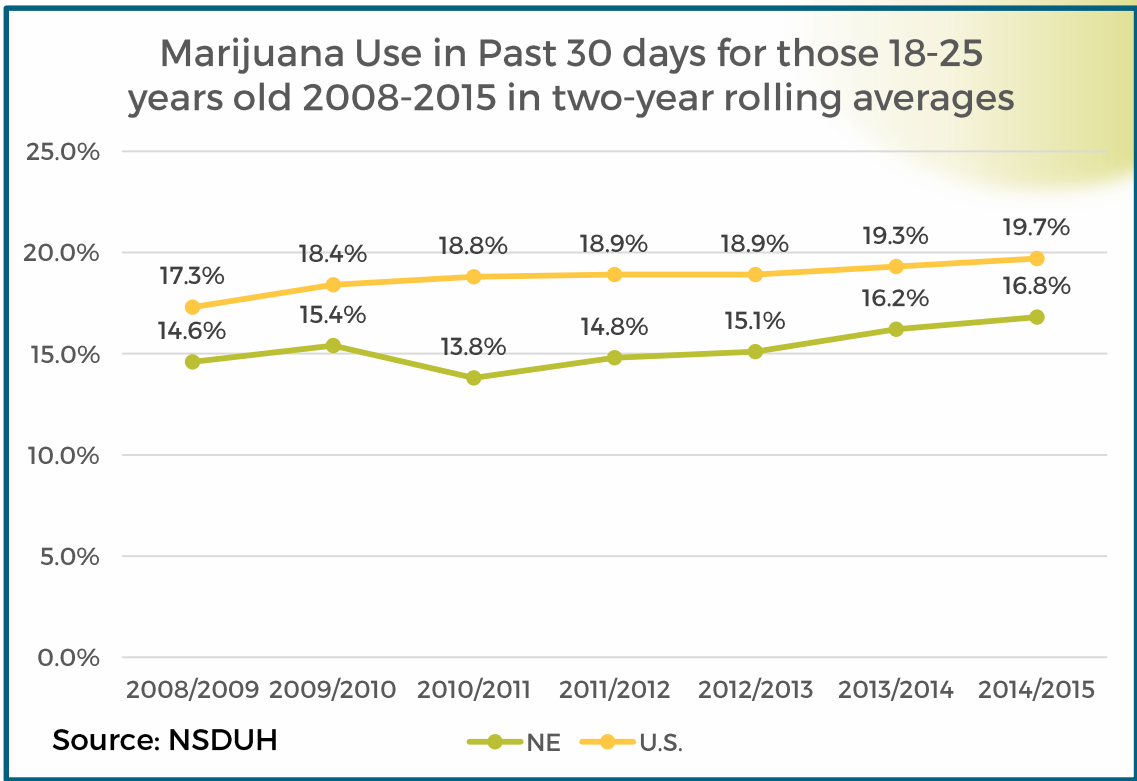
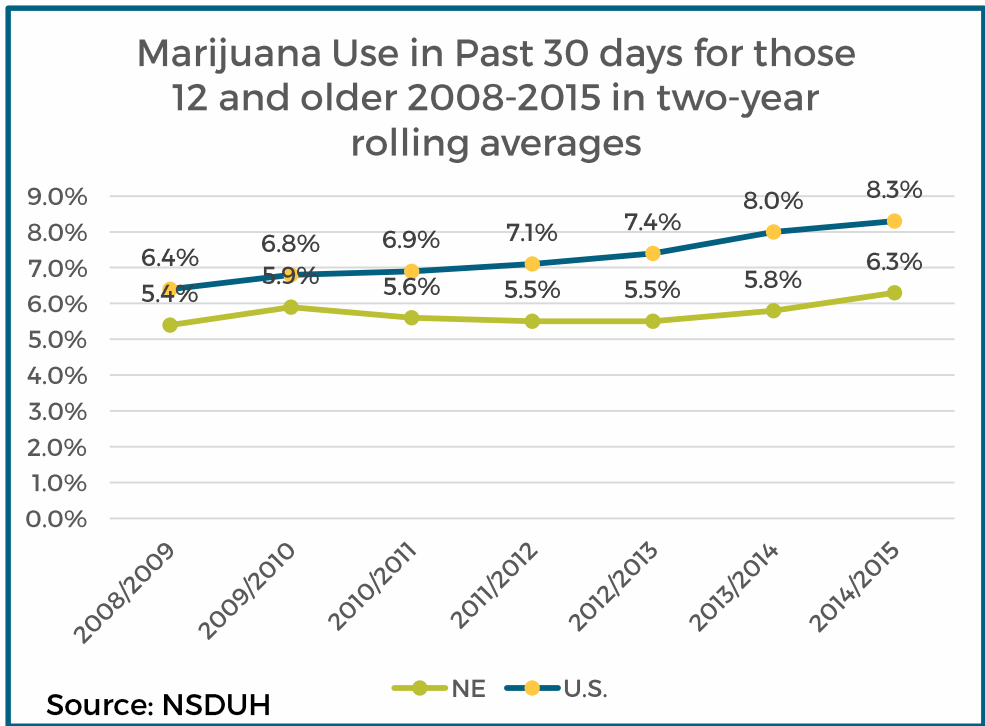
NEBRASKA

Good Life. Great Mission.

DEPT. OF HEALTH AND HUMAN SERVICES

Helping People Live Better Lives.

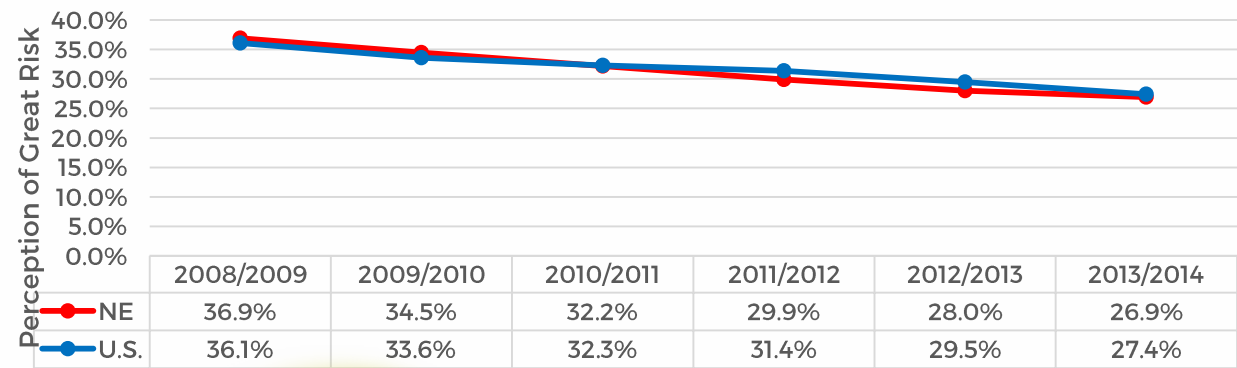
Marijuana Use: Youth and Adult



The use of marijuana in both Nebraska age groups is increasing.

Perception of Risk - Marijuana

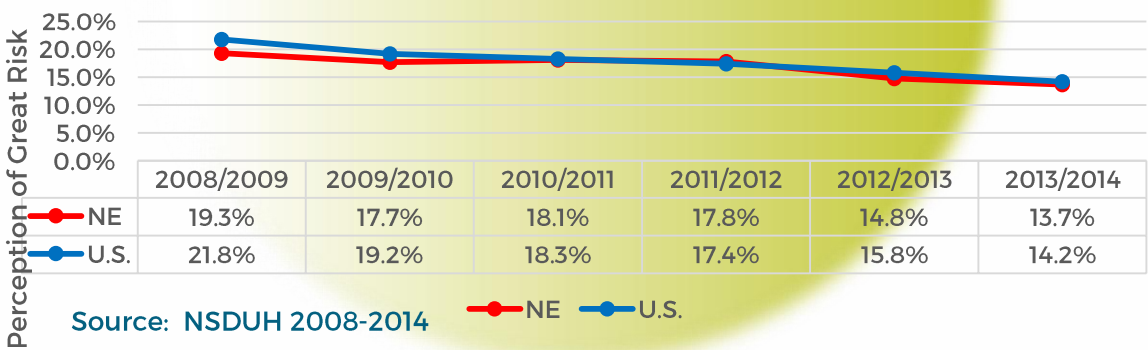
Percent of those 12 and older who perceive great risk from smoking marijuana once a month 2008-2014 in 2-year intervals, NE and U.S. comparison



Source: NSDUH 2008-2014

NE U.S.

Percent of those 18 to 25 who perceive great risk from smoking marijuana once a month 2008-2014 in 2-year intervals, NE and U.S. comparison

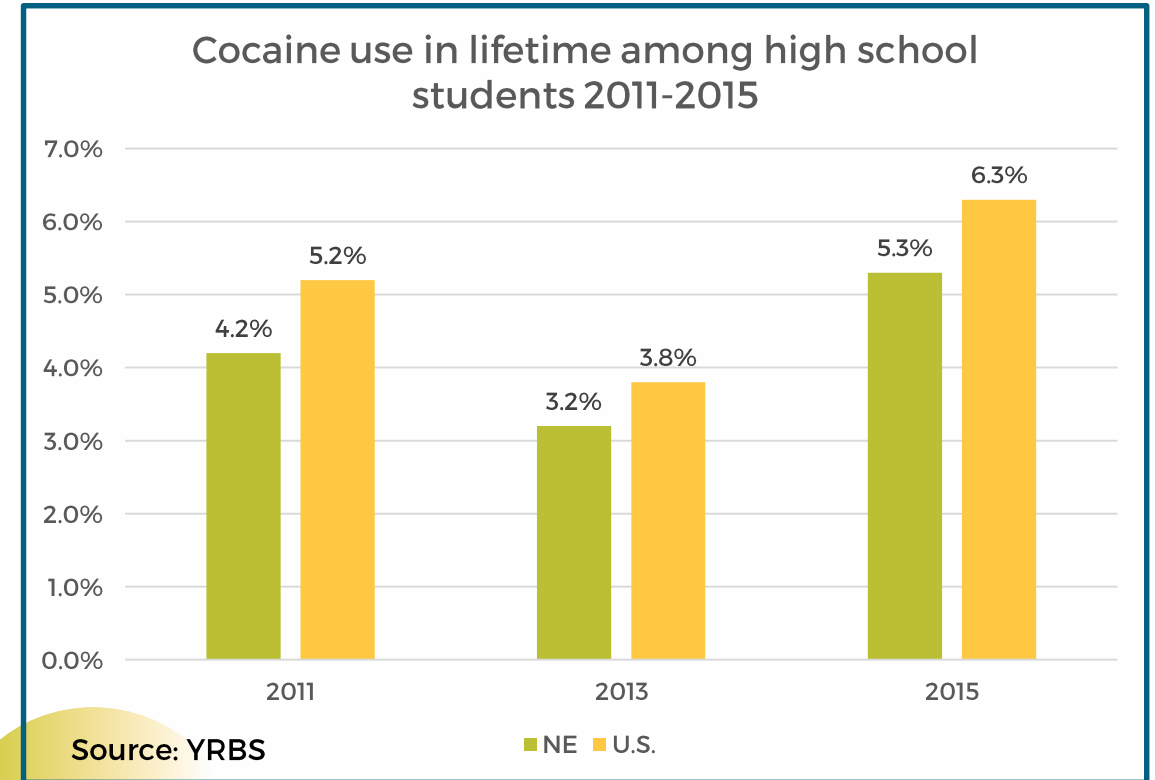
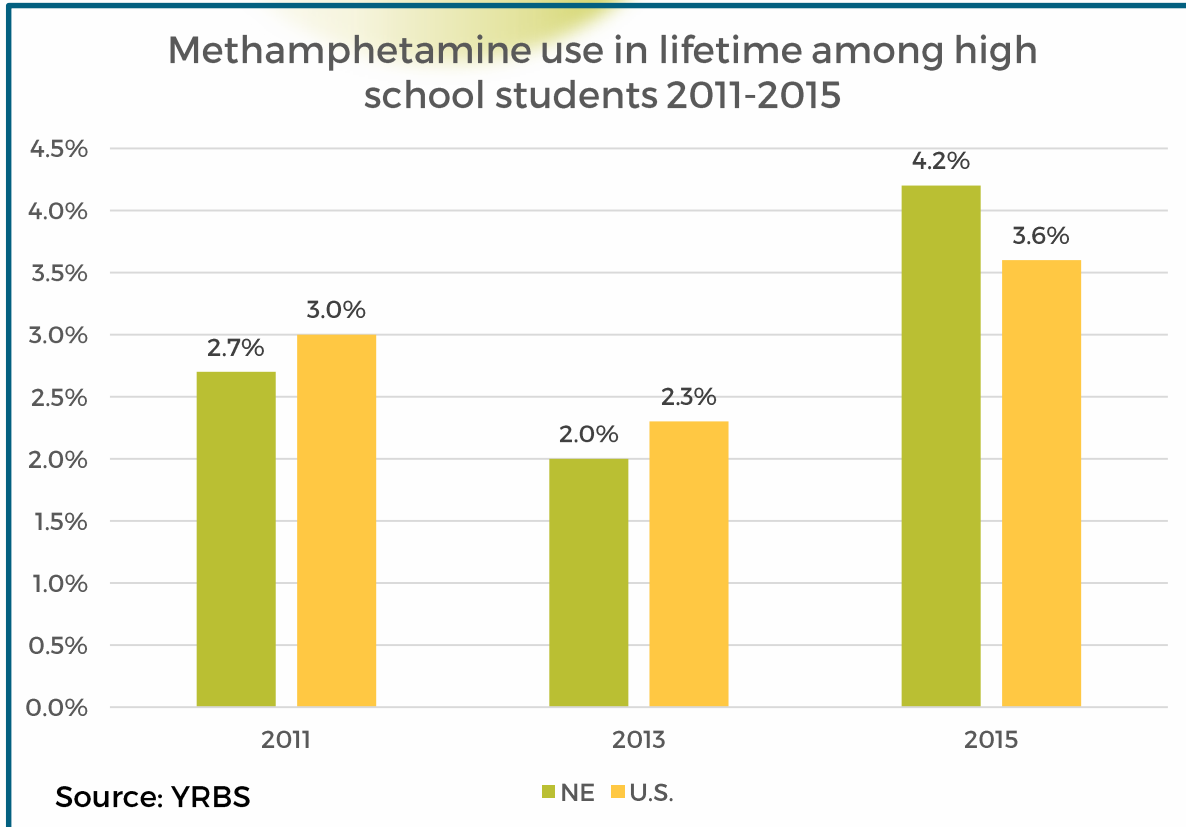


Source: NSDUH 2008-2014

NE U.S.

Youth Substance Use: Meth and Cocaine

The prevalence of meth use among Nebraska high school students is higher than the national average.



Opportunities

➤ System of Care Approach – Adult and Youth

- Prevention and Treatment Umbrella
- Recovery is not just SUD
- MLTC/DBH - Shared Chief Clinical Officer – Prescription Guidelines, PDMP
- Standard SUD Assessment Model: Justice, MLTC, DBH
- Public Health: SEOW, BRFSS, TFN, PDMP, Office of Rural Health
- Training for Addiction Professionals Contract – Justice and DBH
- School and Community Intervention Program – Schools and BH
- Department of Labor – Screening and Referral, MI training

NEBRASKA

Good Life. Great Mission.

DEPT. OF HEALTH AND HUMAN SERVICES

Helping People Live Better Lives.

Opportunities

- **Trauma-Informed Care (TIC)**
 - Consultant assessed 86 agency programs for TIC in 2015 with an improvement in all scores from 2013. Screening, program policies and procedures were identified as the top strengths.
- **Compass EZ (COD)**
 - Similar improvement in agency scores 2013 to 2015
- **SPF PFS Grant**
 - Targets Nebraska counties with few protective factors, high risk factors
 - Focuses on preventing progression of substance use disorders.
- **Project ECHO – it's coming!**
 - SUD and MAT

Opportunities

Initiatives, Projects and Partners

- **Heritage Health - Nebraska Medicaid Managed Care**
 - Integration of primary care, behavioral health and pharmacy
- **Governor's Priorities**
 - Metrics and outcome measures
- **Collaborative work with UNMC and UNMC College of Public Health**
 - Omaha Collegiate Consortium (SBIRT)
 - MAT
 - BHECN – Workforce Development and Project ECHO
- **Time Out to Talk about Substance Use Campaign – Husker Sports**
- **Addiction Fellowship**
- **Peer Support (Integrated, Adult, Family, Transition Age Youth)**

Sheri Dawson, RN

Director
Division of Behavioral Health
Nebraska Department of Health and Human Services

Sheri.dawson@Nebraska.gov

402-471-8553



@NEDHHS



NebraskaDHHS



@NEDHHS

dhhs.ne.gov

NEBRASKA

Good Life. Great Mission.

DEPT. OF HEALTH AND HUMAN SERVICES

Helping People Live Better Lives.